

ISAF M.TG srl Via B. Parodi, 286/A 16010 Ceranesi - Genoa Italy  
 Tel. 010781793 - 0107848136 Fax 0107268816 e-mail: info@isafmtg.com

Type **VER-L** Datasheet **27.5.10.6**  
 Rev. 0 Date 02/03/2003 Page 1/1

**CONFIGURATION**  
 Vertical cylindrical vessel, complete with connections for plant and with the accessories requested by the classification society.

**APPLICATION**  
 Compensating the water volume reduction inside the plant when temperature decreases and keeping plant pressurization within the set limits.

**DESIGN CONDITIONS**  
 Max. Pressure 6 bar  
 Max. Temperature 90 °C  
 Min. Temperature 0 °C

**SPECIAL PLANTS**  
 Particular constructions are realized on customer's specification.

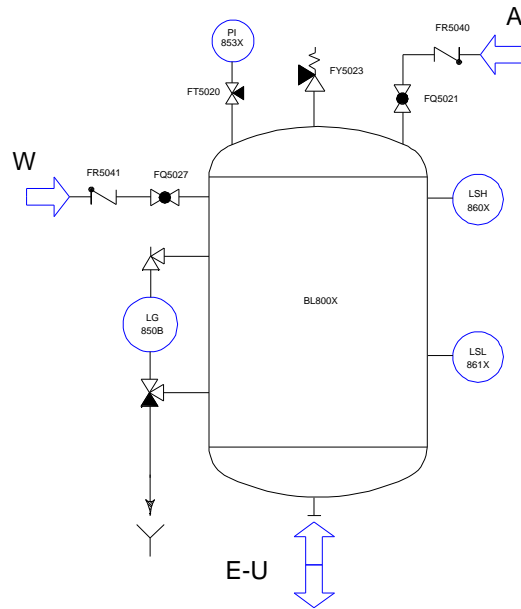
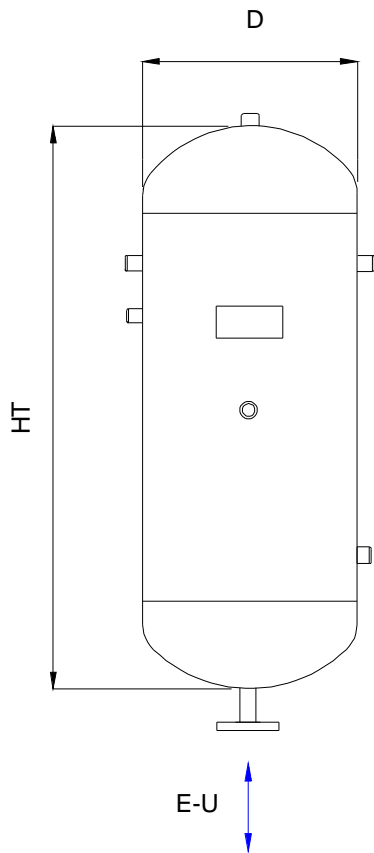
**ACCESSORIES AND COMPONENTS**  
 ISAF systems can be supplied complete with monitoring equipments, valves, switchboards and other accessories which assure their proper functioning.  
 For an easier installation a wide range of components can be supplied.

**TESTS**  
 RINA - ABS - LR - BV - GL - DNV - MMI

**MATERIALS**  
 A1 STEEL P 265 GH  
 A2 STEEL P 355 NH  
 A3 ASTM A 106 B  
 X AISI 304 L  
 XX AISI 316 L

**CONNECTIONS**  
 Threaded BSP - NPT  
 Flanged UNI - DIN - ASME - JIS

**TREATMENTS**  
 Treatment of internal and external surfaces according to the application of the plant.



All information and data shown on this datasheet can be modified without notice

Standard flanges: UNI2278/67 NP16

Model	Capacity Lt.	Max.Design Pressure bar	D	HT	L	H	E - U	Weight Kg.
VER-L100	100	6	350	1100			ND32	40
VER-L150	150	6	400	1250			ND32	46
VER-L200	200	6	440	1400			ND32	58
VER-L270	270	6	490	1460			ND40	65