

ISAF M.TG srl Via B. Parodi, 286/A 16010 Ceranesi - Genoa Italy
Tel. 010781793 - 0107848136 Fax 0107268816 e-mail: info@isafmtg.com

Type **SAM** Datasheet **3.5.20.3033**
Rev. 0 Date 02/03/2003 Page 1/1

CONFIGURATION

Horizontal cylindrical vessel, with or without saddles, complete with valvehead, ISAF or UNI/UNAV type, and with the accessories requested by the classification society.

APPLICATION

Installation on compressed air lines for diesel engine starting.

DESIGN CONDITIONS

Max. Pressure 30 ± 33 bar
Max. Temperature 50 °C
Min. Temperature 0 °C

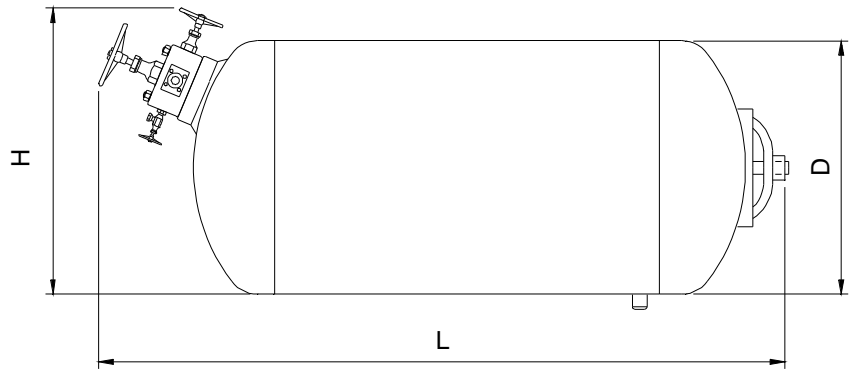
SPECIAL PLANTS

Particular constructions are realized on customer's specification.

ACCESSORIES AND COMPONENTS

ISAF systems can be supplied complete with monitoring equipments, valves, switchboards and other accessories which assure their proper functioning.

For an easier installation a wide range of components can be supplied.



TESTS

RINA - ABS - LR - BV - GL - DNV - MMI

MATERIALS

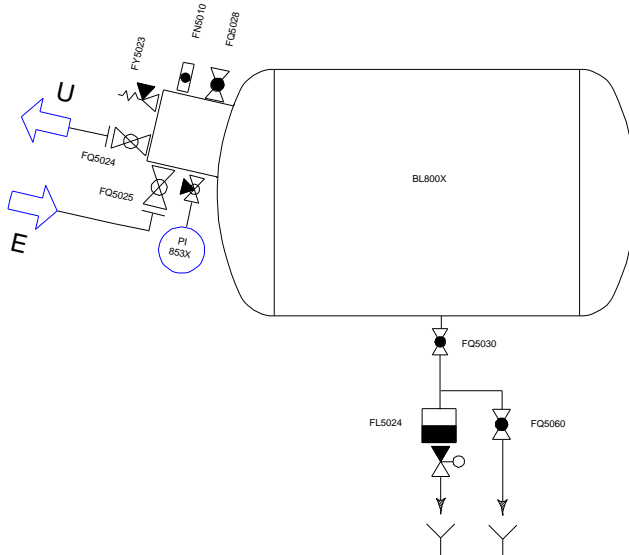
A1 STEEL P 265 GH
A2 STEEL P 355 NH
A3 ASTM A 106 B
X AISI 304 L
XX AISI 316 L

CONNECTIONS

Threaded BSP - NPT
Flanged UNI - DIN - ASME - JIS

TREATMENTS

Treatment of internal and external surfaces according to the application of the plant.



All information and data shown on this datasheet can be modified without notice

Model	Capacity Lt.	Max.Design Pressure bar	D	HT	L	H	E - U	Weight Kg.
SAM1000H	1000	33	800		2650	900	ND20 - 40	515
SAM1500H	1500	33	950		2800	1050	ND20 - 40	800
SAM2000H	2000	33	1100		2950	1100	ND20 - 40	1160
SAM3000H	3000	30	1300		3000	1300	ND25 - 50	1480
SAM4000H	4000	30	1600		2800	1600	ND25 - 50	2050