

ISAF M.TG srl Via B. Parodi, 286/A 16010 Ceranesi - Genoa Italy
 Tel. 010781793 - 0107848136 Fax 0107268816 e-mail: info@isafmtg.com

Type	CRS	Datasheet	6.5.20.30
Rev.	0	Date	02/03/2003
		Page	1/1

CONFIGURATION

Horizontal cylindrical vessel, with or without saddles, complete with valvehead, ISAF or UNI/UNAV type, and with the accessories requested by the classification society.

APPLICATION

Installation on compressed air lines for diesel engine starting.

CONSTRUCTION

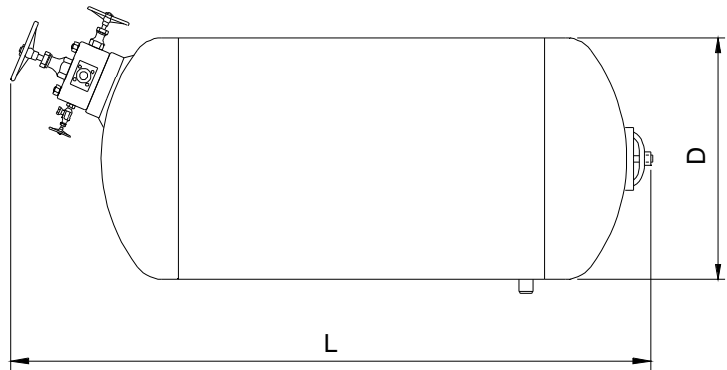
The choice of a type of stainless steel with high mechanical features allows particularly light constructions.

DESIGN CONDITIONS

Max. Pressure 30 bar
 Max. Temperature 50 °C
 Min. Temperature 0 °C

ACCESSORIES AND COMPONENTS

ISAF systems can be supplied complete with monitoring equipments, valves, switchboards and other accessories which assure their proper functioning. For an easier installation a wide range of components can be supplied.



TESTS

RINA - ABS - LR - BV - GL - DNV - MMI

MATERIALS

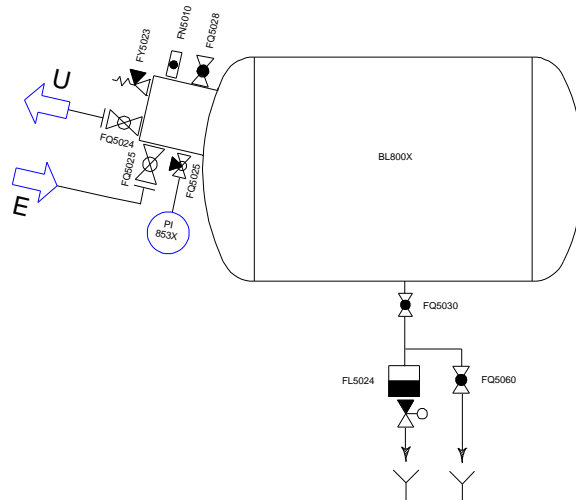
YXX CHROME STEEL

CONNECTIONS

Threaded BSP - NPT
 Flanged UNI - DIN - ASME - JIS

TREATMENTS

Stainless steel construction does not need anticorrosion treatments either on internal or external surfaces. The supplied vessel is painted on the outside.



All information and data shown on this datasheet can be modified without notice

Model	Capacity Lt.	Max.Design Pressure bar	D	HT	L	H	E - U	Weight Kg.
CRS800H	800	30	800		2150		ND20 - 40	230
CRS1000H	1000	30	800		2550		ND20 - 40	280
CRS1500H	1500	30	900		2950		ND20 - 40	494